

MAP APPENDIX

Connecting Our Communities: 2035 Regional Transportation Plan for the communities and rural areas of Mesa County

Brought to you by the
Grand Valley Regional Transportation Committee

Final Report April 2011



Catalyst, Inc.



Table of Contents

Figure 3: 2005 Household Density.....	1	Figure 5: I70 A (2) Corridor.....	34
Figure 2: 2035 Residential Density.....	2	Figure 6: I70 A (3) Corridor.....	36
Figure 3: Residential Growth (2005 to 2035).....	3	Figure 7: US6 A (1) Corridor.....	37
Figure 4: Basic Employment Density (2005).....	4	Figure 8: US6 A (2) Corridor.....	38
Figure 5: Retail Employment Density (2005).....	5	Figure 9: US6 (North Avenue) Corridor.....	39
Figure 6: Service Employment Density (2005).....	6	Figure 10: US6 C (4.1) Corridor.....	40
Figure 7: Total Employment Density (2005).....	7	Figure 11: US6 C (4.2) Corridor.....	41
Figure 8: 2035 Basic Employment Density.....	8	Figure 12: US6 M (5) / Old US Corridor.....	42
Figure 9: 2035 Retail Employment Density.....	9	Figure 13: US50 A (1) Corridor.....	43
Figure 10: 2035 Service Employment Density.....	10	Figure 14: US50 A (2) Corridor.....	44
Figure 11: 2035 Total Employment Density.....	11	Figure 15: SH65 A Corridor.....	45
Figure 12: 2035 Basic Employment Growth (2005 to 2035).....	12	Figure 16: SH139 A Corridor.....	46
Figure 13: 2035 Retail Employment Growth (2005 to 2035).....	13	Figure 17: SH141 A Corridor.....	47
Figure 14: 2035 Service Employment Growth (2005 to 2035).....	14	Figure 18: SH141 B (1) Corridor.....	48
Figure 15: 2035 Total Employment Growth (2005 to 2035).....	15	Figure 19: SH141 B (2) Corridor.....	49
Figure 16: Existing Non-Motorized Facilities.....	16	Figure 20: SH330 A Corridor.....	50
Figure 17: Non-Motorized Vision Concept.....	17	Figure 21: SH340 A (1) Corridor.....	51
Figure 18: Non-Motorized System Alternatives.....	18	Figure 22: SH340 A (2) Corridor.....	52
Figure 19: Financially Constrained Non-Motorized Plan.....	19	Figure 23: SH340 A (3) Corridor.....	53
Figure 20: Existing Transit Service in the Mesa County Region.....	20	Figure 24: I70 Z Corridor.....	54
Figure 21: Transit Vision Scenario.....	21	Figure 25: 29 Road Corridor.....	55
Figure 22: Baseline Transit Scenario.....	22	Figure 26: 24 Road Corridor.....	56
Figure 23: Low Base Transit Scenario.....	23	Figure 27: F Road (Patterson Rd.) Corridor.....	57
Figure 24: Congestion Levels in the Base Year (2005).....	24	Figure 28: 1 st Street (26 Road) Segment Corridor.....	58
Figure 25: Existing and Committed Roadway Network.....	25	Figure 29: 12 th Street (27 Road) Corridor.....	59
Figure 26: Needs Assessment Congestion Levels with 2035 Traffic on the 2014 Existing and Committed Network.....	26	Figure 30: G Road Corridor.....	60
Figure 27: Roadway Alternatives.....	27	Figure 31: Riverside Parkway West Segment Corridor.....	61
Figure 28: Financially Constrained Roadway Capacity Projects.....	28	Figure 32: Riverside Parkway East Segment Corridor.....	62
Figure 29: Congestion Levels for the Financially Constrained Roadway Plan.....	29	Figure 33: L Road / 19 Road Corridor.....	63
Figure 30: Multi-Modal Corridors in the Mesa County Region.....	30	Figure 34: Elberta Avenue (Palisade) Corridor.....	64
Figure 31: I70B (1) Corridor.....	31	Figure 35: H Road Corridor.....	65
Figure 32: I70B (2) Corridor.....	32	Figure 36: H Road Corridor.....	66
Figure 33: I70 A (1) Corridor.....	33	Figure 37: Grand Junction Regional Airport.....	67

Figure 2: Railroads in the Mesa County Region.....	68	Figure 15: Recommended Roadway Improvements Relative to Wetlands, Rivers, and Streams.....	73
Figure 10: Minority and Low Income Concentrations.....	69	Figure 16: Recommended Transit System Relative to Wetlands, Rivers, and Streams....	74
Figure 12: Roadway Improvements in Proximity to Low Income and Minority Areas.....	70	Figure 17: Recommended Non-Motorized Improvements Relative to Wetlands, Rivers, and Streams.	75
Figure 13: Transit System Bus Routes in Proximity to Low Income and Minority Areas.....	71	Figure 18: Recommended Transportation Improvements Relative to Historic Districts, Properties, and Structures.....	76
Figure 14: Non-Motorized Improvements in Proximity to Low Income and Minority Areas.....	72	Figure 19: Recommended Transportation Improvements Relative to Parklands.....	77

Figure 3: 2005 Household Density

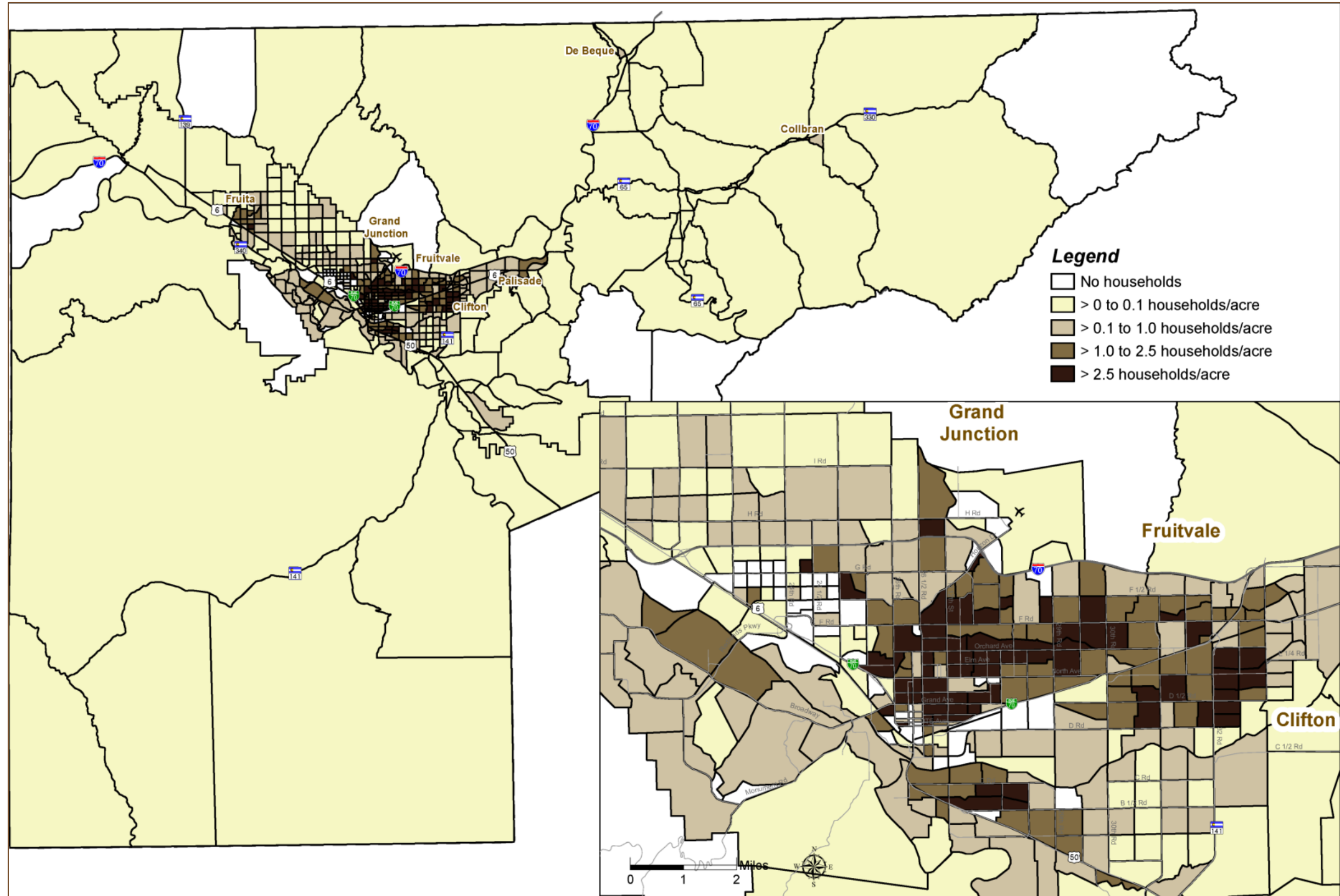


Figure 2 2035 Residential Density



