

# TRANSPORTATION IMPROVEMENT PROGRAM

## GRAND VALLEY METROPOLITAN PLANNING ORGANIZATION

STATE FY 2018 TO 2021



Adopted by the

**Grand Valley Regional Transportation Committee**

Prepared in cooperation with the

Mesa County Regional Transportation Planning Office  
Colorado Department of Transportation  
Federal Highway Administration  
Federal Transit Administration  
Grand Valley Transit  
Mesa County  
City of Grand Junction  
City of Fruita  
Town of Palisade

**April 24, 2017**

**Amendment #1, September 19, 2017**

**Amendment #2, October 23, 2017**

**Amendment #3, December 18, 2017**

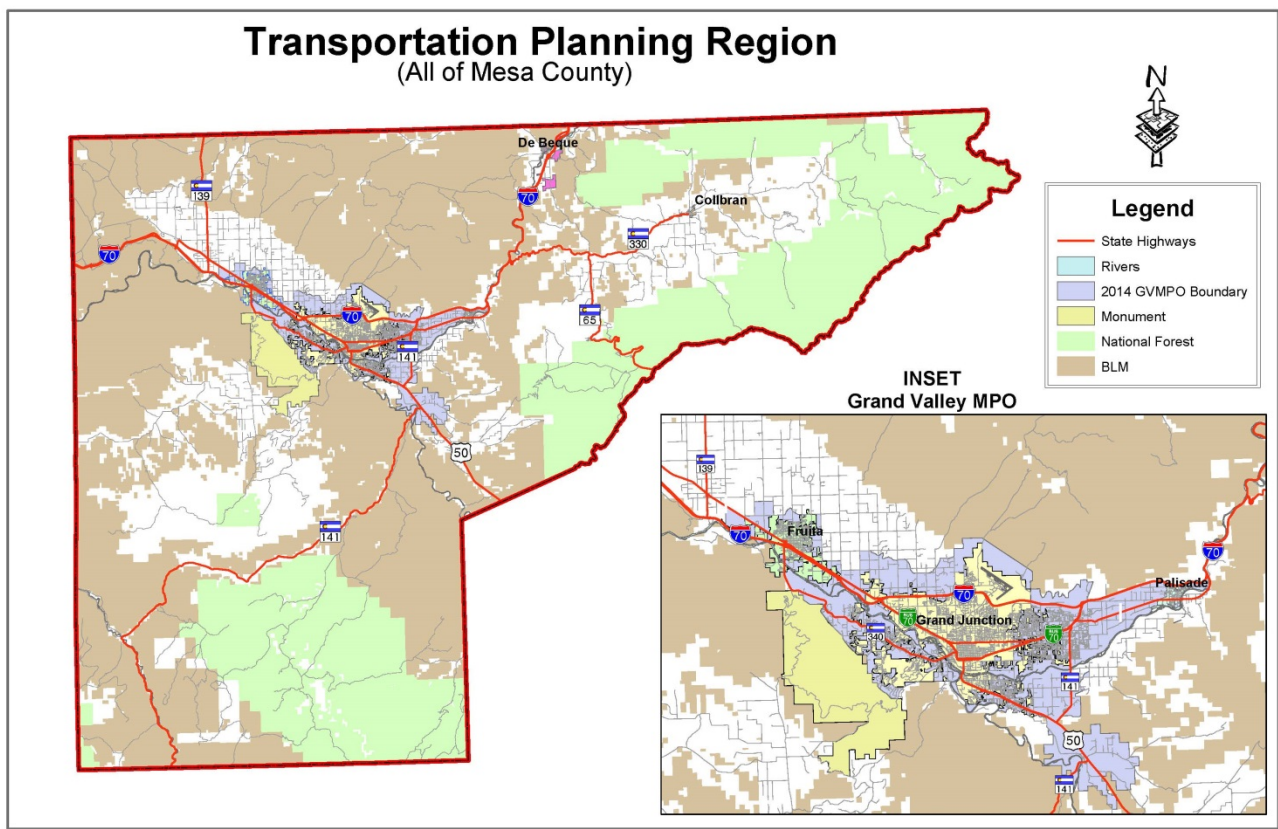
# 2018-2021 TRANSPORTATION IMPROVEMENT PROGRAM

## GRAND VALLEY METROPOLITAN PLANNING ORGANIZATION

### INTRODUCTION

Federal law requires Transportation Improvement Programs (TIPs) for all metropolitan areas exceeding 50,000 in population. TIP's are developed by Metropolitan Planning Organizations designated by the Governor. The Grand Valley Metropolitan Planning Organization (GVMPO) lies within the Transportation Planning Region (all of Mesa County) and serves the Urbanized Area of the Grand Valley (see map and inset below).

### Transportation Planning Region and Grand Valley MPO Planning Area



### METROPOLITAN PLANNING ORGANIZATIONS (MPO)

MPO's have the responsibility for preparing and approving TIPs for their respective urbanized areas. Specific factors, which must be considered in their long range planning and TIP development, are mandated by the federal requirements under previous federal transportation legislation such as the Moving Ahead for Progress in the 21st Century Act (MAP-21) and the current legislation, Fixing America's Surface Transportation Act (FAST Act), signed into law on December 4, 2015 by President Obama. The FAST Act is the first federal law in over ten years to provide long-term funding certainty

for surface transportation. The FAST Act authorizes \$305 billion over fiscal years 2016 through 2020 for the U.S. Department of Transportation's highway, highway and motor vehicle safety, public transportation, motor carrier safety, hazardous materials safety, rail, and research, technology and statistics programs. Overall, the FAST Act largely maintains current program structures and funding shares between highways and transit. It is a down-payment for building a 21st century transportation system, increasing funding by 11 percent over five years. This is far short of the amount needed to reduce congestion on our roads and meet the increasing demands on our transportation systems.

## **TRANSPORTATION PLANNING PROCESS**

A major responsibility of the Mesa County Regional Transportation Office (RTPO) and the GVMPO is the development of a Regional Transportation Plan (RTP) for Mesa County that includes a Long Range Transportation Plan for the Urbanized Area of the Grand Valley. This combined plan or RTP deals with highway networks, transit service, and pedestrian and bicycling facilities. The plan is based on projected population increases and employment trends and is designed to satisfy the mobility needs of citizens of the County and Urbanized Area.

The second product is a Transportation Improvement Program (TIP), which is a rolling four-year capital improvement program for highway, bicycle/pedestrian, and transit projects in the area to implement the recommendations of the RTP. Both the RTP and the TIP must be approved by the GVMPO. The RTP is updated on a regular basis, approximately every four to five years, while the TIP is approved annually.

The GVMPO assists the local governments and transit agency providers of the region in implementing projects within the TIP by programming federal funding for the projects. The GVMPO administers Surface Transportation Program (STP) funds for the Region. STP funds may be used for transportation facility improvements ranging from rehabilitation of existing facilities to new construction. Funds may also be used for transit capital improvements and ride share promotion.

## **TRANSPORTATION IMPROVEMENT PROGRAM (TIP)**

The TIP is a four year capital improvement program for the urbanized area of the Grand Valley. The GVMPO is charged with carrying out comprehensive, cooperative transportation planning by:

- Coordinating projects in the urbanized area initiated by individual City, County, and State agencies;
- Defining project costs and the available financial resources;
- Prioritizing the projects to make the best use of available resources.

The TIP serves not only the need in this area for an efficient transportation system, but also satisfies regulations jointly issued by the Federal Transit Administration (FTA) and Federal Highway Administration (FHWA), regarding the content and purpose of the program. Amendments to an approved TIP are necessary to maintain federal funding for highways and streets within the planning area, and for federal assistance on transit programs. It is developed by the Grand Valley Regional

Transportation Committee (GVRTC), acting as the MPO. The TIP is prepared to encompass four fiscal years, and to roll ahead each year to include an additional year.

## **CONTENTS**

The TIP shall contain all state and federally funded transportation projects in the urbanized area initiated by Mesa County, the City of Grand Junction, Town of Palisade, the City of Fruita and the Colorado Department of Transportation (CDOT). It is also necessary to include operating and/or capital grants from the FTA to agencies (public or private) in the urbanized area. The urbanized area (or Federal Aid Urban Boundary) is defined by the boundary of the MPO.

## **FORMAT**

Format for the TIP is specified by federal and state requirements. Projects are broken out by:

1. General Category – (MPO Priority Projects, Surface Treatment, Transit, etc.)
2. Funding Source – (Regional Priority Projects-RPP, FASTER Safety-FAS, etc.)
3. Priority – the projects are listed by priority in the first year of the program.

Each project must identify the location, description, responsible agency, general purpose, and the breakdown of funding by year and by source. This format is standardized by CDOT for all urbanized areas, and the general purpose is to relate how the project furthers the goals of the State of Colorado's 25-year Transportation Plan.

## **PROCESS**

Projects in the TIP are originally proposed for inclusion by the implementing agencies. Projects are then considered by members of the Technical Advisory Committee (TAC), which is comprised of representatives from all public agencies and other interested individuals involved in construction or operation of transportation systems in the Grand Junction Urbanized area.

After review of the program, the TIP is forwarded to the GVRTC, comprised of local representatives from the Grand Junction City Council, the Mesa County Board of Commissioners, the City of Fruita and the Town of Palisade. The GVRTC may adopt the TIP or refer it back to the TAC for further revision. A copy of the final document is sent to CDOT for review and approval.

Finally, the TIP is sent to the Governor for approval and forwarded to the FHWA for concurrence and/or comments. The FTA, Region VIII office in Denver, Colorado also receives a copy of the approved document.

Amendments to the TIP are required when there are major changes in the cost of a project or when there are additions or deletions of projects within the TIP. Flexibility is required to allow for construction cost changes or for the allocation of additional federal or state funds. Amendments are

processed and approved in accordance with the procedures outlined in the TIP Amendment Process section below.

### **PROJECT PRIORITY STATEMENT**

This TIP implements those needed improvements identified in the MPO's adopted long-range transportation plan. The projects selected and incorporated within the FY 2018-2021 TIP are consistent with MAP-21, FAST, and with the GVMPO's Unified Planning Work Program (UPWP). These projects are financially feasible for the appropriate funding category, and the projects present MPO project priorities.

MPO project priorities were established in the Grand Valley 2040 Regional Transportation Plan (GV 2040 RTP), adopted in December 2014. The project prioritization criteria and the selection methodology are described therein. The GV 2040 RTP is available for review at [www.gv2040rtp.org](http://www.gv2040rtp.org)

### **TIP AMENDMENT PROCESS (ADOPTED APRIL 28, 2014)**

Amendments to the TIP are necessary in order to facilitate project implementation, identify changes in funding and scheduling, and add or delete projects. TIP amendments will be forwarded to CDOT upon approval at the appropriate organizational level, as described below. Amendments approved by the GVRTC will be accompanied by a Resolution of Adoption. Any member may request GVRTC review of action(s) taken by the GVMPO staff or the TAC.

The two types of amendments are described below:

#### **GVRTC (Policy) Amendments** (initial TAC processing required)

1. Any new project is a policy amendment. This applies to RPP and any other Federal fund source or FASTER funded projects.
2. Adding funds to an existing project that makes the total \$2.5M or more. This applies to RPP and any other Federal fund source or FASTER funded projects. The \$2.5M threshold would be the total of the project cost in the six TIP years (four years beginning with the 2016-2019 TIP); any amendment that will bring a project's total cost to \$2.5M or more will be considered a policy amendment at that time.
3. A modification in a project's activity, location or schedule that results in a formal re-evaluation of the National Environmental Policy Act (NEPA) document.
4. Adding projects that require air quality conformity determination, if applicable.
5. Deleting projects from the TIP.

#### **Administrative (GVMPO Staff) Amendments**

Any amendments that do not meet the criteria for a policy amendment, including, but not limited to:

1. A change in funding source.
2. A change in project cost that results in a project total of less than \$2.5M of RPP or any other federal fund source or FASTER funded projects, annually, whichever is larger.

## STATEWIDE TRANSPORTATION IMPROVEMENT PROGRAM (STIP)

The STIP is developed through a cooperative process between CDOT, MPOs, Federal, City, and County Governments. The STIP is the statewide counterpart to the TIP (projects developed by the MPO's for their respective TIP's are also included in the STIP).

### PUBLIC INVOLVEMENT

#### Policy Amendments

1. Upon completion of a DRAFT TIP or TIP Policy Amendment, a public notice (legal ad) will be published in the Grand Junction Daily Sentinel. The legal ad shall contain the same information shown in the TIP for each amendment item. The public notice will be published a minimum of two weeks prior to the scheduled public hearing date or e-mail vote by the GVRTC.
2. On the 1<sup>st</sup> day the DRAFT TIP or TIP amendment is available for public review, the document will be available in hard copy at the GVMPO/RTPO office. In addition, on that same date, the DRAFT TIP or TIP amendment will be available on-line on the GVMPO/RTPO web site home page under the Transportation Improvement Program link. During the TIP amendment review period, the GVMPO Office Administrator will e-mail or provide a hard-copy of the latest DRAFT TIP amendment to any requesting party.
3. Any comments received will be considered for inclusion in the DRAFT TIP or TIP Amendment.
4. Comments will also be taken during the public comment period at the GVRTC meeting.

#### Administrative Amendments

There will no public notice of administrative amendments. Administrative amendments will be posted on the GVMPO/RTPO website [www.mesacounty.us/rtpo](http://www.mesacounty.us/rtpo) for public viewing.

Copies of the proposed TIP and STIP are made available on the GVMPO/RTPO web site for all interested parties [www.mesacounty.us/rtpo](http://www.mesacounty.us/rtpo)

#### Mailed written comments should be sent to:

Grand Valley Metropolitan Planning Organization  
Attn: Kathy Young  
P.O. Box 20,000 Dept. 5093  
Grand Junction, CO 81502-5001

## FEDERAL AID TRANSPORTATION FUNDING – OVERVIEW

The TIP is developed in compliance with FHWA and FTA regulations within MAP-21 and FAST. Federally funded projects in the TIP follow these regulations.



## FEDERAL FUNDS PROGRAMMED BY THE GVMPO

**CONGESTION MITIGATION / AIR QUALITY (CMAQ) FUNDS:** The GVMPO does not currently qualify for these funds. This funding program is for projects that can be proven to reduce traffic congestion and/or improve air quality in non-attainment areas. Projects such as park and ride lots, signal coordination, trails and pedestrian facilities, and rideshare qualify for these funds. Demonstration of the projects air quality benefit must be shown in order to be eligible for this fund.

**FTA SECTION 5307 PROGRAM:** This program can be used for capital funds and for eligible preventive maintenance costs. The funding is distributed annually by apportionment based on population, population density, and bus revenue miles of service.

**FTA SECTION 5309 PROGRAM:** This program provides discretionary funding for capital improvement projects such as the purchase of buses or the construction of operating and maintenance facilities. FTA allocates these funds throughout the country on the basis of need. This fund is purely discretionary and is usually approved in the fall of each year, after the publication of the TIP. The projects listed in the TIP funded with FTA 5309 funds are shown for illustrative purposes only. If any of these projects are awarded funding, the TIP will be amended to show these changes.

## FEDERAL FUNDS PROGRAMMED BY CDOT

**BRIDGE REPLACEMENT PROGRAM:** This program provides funds for the replacement of substandard bridges, both on and off federal-aid systems. Bridges must have a span of 20 feet in order to be eligible to receive these funds. CDOT evaluates all eligible bridges in the state and bridges with a sufficiency rating less than 50 are eligible to receive funding on a first-come, first-served basis. CDOT re-inventories the bridges about every two years. The State Transportation Commission has established a policy that 65% of these funds are used for bridges on the state system with the remaining 35% being used for bridges under local jurisdiction. Application is made to the Joint Highway Committee for all local jurisdictions.

**ENHANCEMENTS:** There are ten types of Enhancements, which include historic preservation, bicycle and pedestrian facilities, transit, water runoff mitigation, and safety projects including hazard elimination, railroad crossings, and railroad protective devices. Application is made to CDOT annually and projects are recommended for funding by a CDOT advisory committee.

**NATIONAL HIGHWAY SYSTEM (NHS):** This funding category can only be used by CDOT and includes all interstate and other major U.S. routes and state highways.

**NON-URBAN AREA STP:** These funds may be spent on projects within cities that are outside of urbanized areas and that have a population under 5,000 as part of the STP program. Local jurisdictions outside the urbanized area can apply for these funds through the Joint Highway Committee.

**RAILROAD CROSSINGS / RAILROAD PROTECTIVE DEVICES:** These funds may be spent on railroad crossings statewide for modernization and safety improvements. Local jurisdictions can apply for these funds through the Joint Highway Committee.

**FTA SECTION 5310 PROGRAM:** This program provides funding to private non-profit agencies for capital improvements for the provision of transportation services to elderly and disabled persons. CDOT established a committee to review project applications and to make recommendations for these funds. CDOT applies to FTA for approval to fund the recommended projects.

**FTA SECTION 5339 PROGRAM:** This program provides discretionary funding for capital improvement projects such as the purchase of buses or the construction of operating and maintenance facilities. FTA allocates these funds throughout the country on the basis of need. This fund is purely discretionary and is usually approved in the fall of each year, after the publication of the TIP. The projects listed in the TIP funded with FTA 5339 funds are shown for illustrative purposes only. If any of these projects are awarded funding, the TIP will be amended to show these changes.

### STATE FUNDS PROGRAMMED BY CDOT

**FUNDING ADVANCEMENTS FOR SURFACE TRANSPORTATION AND ECONOMIC RECOVERY ACT OF 2009 (FASTER):**

- Bridge Safety
- Transit
- Roadway Safety

### FUNDING SOURCES PRESENTED IN THIS TIP

The GVMPO TIP is organized by funding program. Projects in the TIP are categorized according to the sources of funding that are found in the STIP. There is a wide range of federal/non-federal match ratios across the funding sources. The specific funding source(s) is shown in the column labeled “Funding Type” with abbreviations as follows:

| <b>HIGHWAY</b>                      |     |
|-------------------------------------|-----|
| Regional Priority Projects          | RPP |
| FASTER Safety                       | FAS |
| Surface Treatment                   | SUR |
| Bridge Preventive Maintenance       | BPM |
| Construction Bridge Program         | CBP |
| Bridge Off-System                   | BRO |
| Hazard Elimination                  | HAZ |
| RAMP                                | RMP |
| Transportation Alternatives Program | TAP |
| Transportation Commission           | TC  |



## TRANSIT

FTA 5307: Small Urban Cities (FTA funds allocated on a formula basis to urban areas with a population between 50,000 and 100,000)

FTA 5309: Capital Investment Program (discretionary capital funds)

FTA 5310: Transportation for Elderly Persons & Persons with Disabilities

FTA 5316: Job Access Reverse Commute (JARC)

FTA 5339 Transit 5339: Bus and Bus Facilities

The following abbreviations may also appear in project-specific entries:

|   |     |
|---|-----|
| Capital Development Committee (CDOT)              | CDC |
| Interstate Maintenance                            | IM  |
| Local   | L   |
| Local Overmatch                                   | LO  |
| National Highway System                           | NHS |
| Railroad Crossing Program – At Grade              | RAG |
| Surface Transportation Program Hazard Elimination | SHE |
| State Highway Funding                             | SHF |
| Surface Transportation Program                    | STP |
| Surface Transportation Program – Any Area         | STA |
| Surface Transportation Program – Flexible         | STF |
| Transportation Commission Contingency (CDOT)      | TCC |

## NON-FEDERAL CASH MATCH REQUIREMENTS

As the sponsor of a federally funded project the GVMPO, CDOT, and municipalities typically pay a percentage of the total project cost. This is referred to in the TIP as the Local Match. Different funds typically have different cash match percentages.

## LIST OF ACRONYMS

|       |   |
|-------|---|
| ADT   | Average Daily Traffic                           |
| AADT  | Annual Average Daily Traffic                    |
| CDOT  | Colorado Department of Transportation           |
| DOT   | U.S. Department of Transportation               |
| EPA   | U.S. Environmental Protection Agency            |
| FHWA  | Federal Highway Administration                  |
| FTA   | Federal Transit Administration                  |
| GVMPO | Grand Valley Metropolitan Planning Organization |
| GVRTC | Grand Valley Regional Transportation Committee  |
| GVT   | Grand Valley Transit                            |
| HPMS  | Highway Performance Management System           |
| MPO   | Metropolitan Planning Organization              |

|        |  |
|--------|--|
| NAAQS  | National Ambient Air Quality Standard        |
| NEPA   | National Environmental Policy Act            |
| PM 2.5 | Particulate Matter less than 2.5 micrometers |
| RTP    | Regional Transportation Plan                 |
| SIPs   | State Implementation Plans                   |
| STIP   | Statewide Transportation Improvement Program |
| STP    | Federal Surface Transportation Program Funds |
| TAC    | Technical Advisory Committee                 |
| TIP    | Transportation Improvement Program           |
| UPWP   | Unified Planning Work Program                |
| VMT    | Vehicle Miles Traveled                       |